



WATERLEA SCHOOL

He nui te akoranga ki Waterlea Great learning happens at Waterlea

Hello, Kia Ora, Kia Orana, Bonjour, Talofa Lava, Taloha Ni, Bula Vinaka, Ni Hau, Namaste, Malo e Lelei, Deea awit, Sagutom, Fakalofa Lahi Atu, Dia daoibh, Sillaw, Huan Ying, Hola, Konichiwa, Guten Tag, Здравствуйте

Newsletter 4 September 2024

Important Dates

6 Sept	Kahui Ako event 'All Out Showcase' Onehunga High School 5pm - 7:30pm
10 Sept	Middle School Talent Show 9:15am
11 Sept	Swimming Day
11 Sept	MOSA Tackle Rugby Zone Day
12 Sept	Junior Fun Run 9 - 9:30am
16 Sept	Te Wiki o te Reo Maaori, Maaori Language Week
19 Sept	Student Led Conferences Children go home at 1pm
20 Sept	PTA Sausage Sizzle
23 Sept	Board Of Trustees Hui 3:30pm
23 Sept	Cross Country Yrs 3-6
24 Sept	Class & Individual Photos
27 Sept	Whole School Mana Assembly 9:30am
27 Sept	Term 3 Last Day
25 Oct	Teacher Only Day (school closed)

What a big day our youngest tamariki had last week when they visited Ambury Farm. We are so fortunate, having this learning resource as part of our local environment and community. It is also within walking distance, making it even more accessible. Our tamariki did very well managing themselves on the hike there and back. A big thank you to all the whaanau that supported our trip by coming along as parent helpers - you make it possible to organise such enriching learning activities. The trip to the farm has provided our kaiako with planning opportunities to enhance development in oral language, writing, numeracy, art and science. We really appreciate the relationship Waterlea has with Ambury Farm and a big thank you to the rangers who made the day extra special. Our Year 3 - 4 tamariki also had a great visual arts experience this week when they visited Te Tuhi Art Centre. We enjoy these visits because Te Tuhi offers interactive, hands-on learning experiences in the art studio paired with educator-led tours of Te Tuhi's current exhibitions. Te Tuhi's education programmes are engaging, creative and inter-curricular. Programme activities can include observing artworks, creatively responding to ideas through group discussion and practical exercises. Finally we'd like to acknowledge our Tongan tamariki and their whaanau who performed at our MANA assembly last week. What a joyful, positive experience it was and we all learnt more about the Tongan culture and language through your sharing.





Kunekune patting time!



Hoiho patting time!



Look at all the "Piggity-Wiggity-Jiggity" pigs!..



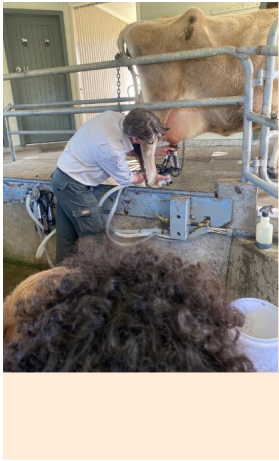
We've arrived!
Morning tea first
before the farm
adventures begin!..



Crutching
time with
Millie the
Ranger!



"Moo!
I'm Karen
the Jersey
Cow!"



Ranger Shaun
showed us how
he milks Karen
the jersey cow!



JOKE TIME...
**WHY IS MILK THE FASTEST
DRINK? BECAUSE IT'S
'PAST-YOUR-EYES' BEFORE YOU
KNOW IT!'**

millie 29.8.24

We went to the farm. I fed the lamb. They sacked the bottle so hard. We fed the m grass. We went to the farm and I had fun.

AUGUST 29.8.24

This is the area cow.

29.8.24 Adeline

We went to Ambury farm. It was fun when we got to play in the long grass. It was fun when I kept falling over.

Kassandra 29.8.24

We went to the farm. The farm was fun. and I liked the baby goat I liked the baby sheep. I liked feeding the chickens with food.

Student Led Conferences (SLC)

SLC are being held in a couple of weeks - Thursday 19 September. The SLC start at 2.00pm and finish at 7.10pm and there will be 3 to 4 conferences happening at the same time within each classroom. Please note that children go home early the day of the SLC at 1pm.

As the name suggests SLC is an opportunity for students to lead a conversation about their learning at Waterlea. Each SLC lasts for 25 minutes and the teacher will also be available to answer questions during this time.

If English is not the language used in your home, we invite you to conduct your child's conference in the language with which you feel most comfortable. You will need to use an online platform to book an SLC so please visit the school interviews website to select a time that suits your family. We will email this information to you this Friday. If you do not have access to a computer, our office staff will be able to help you. As this is a time to focus on your child and their learning, we ask that if you are bringing other siblings along to SLC, that you make use of the child minding service in the library space between Rooms 6 and 7. If you intend to do this, please complete the google form linked to the email you will be sent on Friday. This service is available from 2pm.

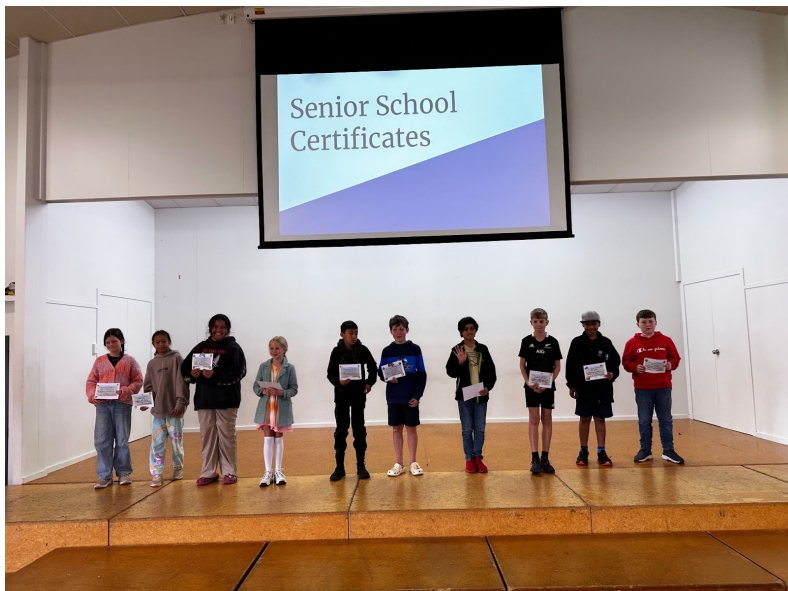


Remember Worm Wee is available from the office!

\$5 for 1 Litre

\$10 for 2 Litres

Last week's MANA Assembly





Our condolences

The Waterlea community extend our condolences to the whaanau of Kiingi Tuuheitia and the people of Tainui. We acknowledge his leadership of the Kiingitanga movement for the last 18 years and his message to all New Zealanders of Kotahitanga or unity. Our thoughts are also with Waterlea whaanau attending his tangihanga this week at Turangawaewae Marae.

Kahui Ako event 'All Out Showcase'

We are all looking forward to some of our Waterlea tamariki performing this Friday 6 September, 4.15pm - 7.30 pm at Onehunga High School. If this involves your child, look out for some more information coming to you tomorrow.

Please keep your old stockings, tights or similar

Any condition! Holes and all!

Kapa Haka need them to repair their uniforms

Please drop off to the office anytime



Kia ora whanau,

We are currently missing quite a number of sports uniforms and we need them for our teams who go and play in the Zones sports competitions. Could everyone please have a look for t-shirts with collars, as pictured, that have Waterlea printed on the back.

These are our sports uniforms.

Please return them to the school office as soon as possible.

Thank you.

Judy Edwards and Steve Matthews
P.E. Lead Teachers

Lucky Book Club Lucky Book Club Lucky Book Club

Thanks everyone for your continued support of
our school library

You can still order from the latest catalogue

**Last Day To Order
This Friday 6 September**

love 
tennis

www.lovetennis.kiwi



FIND A CLUB NEAR YOU

FREE
EVENT

**EVERYONE
IS WELCOME!**

8 SEPTEMBER 2024

10-2PM

AT BRIDGE PARK TENNIS CLUB

All equipment provided. Prizes, giveaways, BBQ & more.

PROUDLY SUPPORTED BY



AO TRAVEL
& EXPERIENCES

ASB  CLASSIC

We're proudly supporting
Mental Health Foundation
MOUNT ID, MOUNT ERN
www.mentalhealth.org.nz

News from the Board of Trustees

Waterlea School Board Casual vacancy for a parent representative

A casual vacancy has occurred on the school board for an elected parent representative.

The board has decided to fill the vacancy by selection.

If 10% or more of eligible voters on the school roll ask the board, within 28 days of this notice being published, to hold a by-election to fill the vacancy, then a by-election will be held.

Request for a by-election should be sent to:

Presiding member

Waterlea School Board

17 House Ave

Māngere Bridge

Auckland



COLLECT YUMMY STICKERS AND GET SPORTS GEAR FOR OUR SCHOOL!

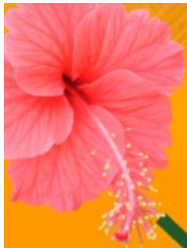
Collect the Yummy cut-out labels from bags (each cut-out label is worth 10 stickers) and individual Yummy apple stickers for Waterlea School's share of the \$200,000 free Sport sports gear prize pool.

Yummy apples are available from New World, PAK'nSAVE and participating Four Square stores. The more you collect, the more sports gear we can get so get going and start collecting your Yummy cut-out labels and stickers now!

All stickers/cut-outs along with your school's Total Tally Sheet must received by us by Tuesday 24 September.

[Download your sticker collection sheet here or pick one up at the office.](#)





TIK Lalaga Presents

Friday 6th
September 2024

Starts at 5pm

Venue:
Onehunga High School

ALL OUT SHOWCASE



Register your group now to secure your spot to perform at ALL OUT SHOWCASE - ALL are welcome!

Gold coin donation entry * Food available for purchase * Prizes * Special guest judges and MC And much more!

This is an evening of celebration at the "ALL OUT SHOWCASE" where students from our 10 schools will showcase their talents in a relaxed and supportive environment. This event is about enjoying food, entertainment, and celebrating our community's creativity.

Some examples of performance: * Cultural dance * Singing * Spoken word * Hip hop dance * Solo artist * Playing instruments * and so much more

Special Notes: Family members are welcome to perform alongside students in a supporting role if needed e.g. playing a back up instrument. Performances do not need to be polished; the focus is on participation and enjoyment.

Prizes: We are excited to announce special guest judges and prizes to be won, as well as spot prizes throughout the night.

Registration Procedure: Using the QR CODE to register your performance. Or you can email to register (email below).



For any questions, please email: lalagatik@gmail.com





JOIN US FOR
A
KANIKANI

MANGERE MEMORIAL HALL
530-930PM
DOORS OPEN 5PM

Featuring performances by Mangere Bridge and
Waterlea Primary Schools

FRIDAY 25 OCT

\$15 Adult 16yrs+
\$5 per child 5-15

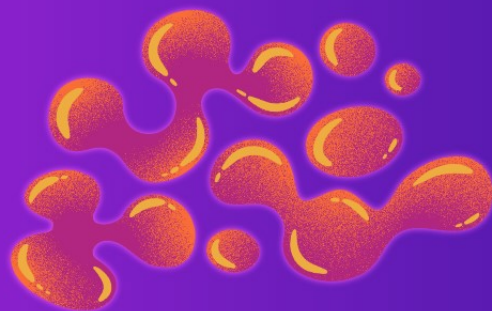
Free child ticket with every paying adult
02 0191 0378769 008

Surname as reference and child's name in
Particulars Field

Food and Drinks available to purchase
STRICTLY NO ALCOHOL, SMOKING OR
VAPING

For all enquiries
Contact Norma on
02108853324 or
norms75@hotmail.com

LIMITED TICKETS



Swimming - This Term - Years 4, 5 & 6

Community Swim will happen this term for our year 4, 5 and 6 tamariki. This is a fully funded opportunity for the children to learn water confidence and safety, and have some fun at Moana nui a Kiwa pools in Mangere.

Times as follows:

Room 10 9:30 - 10:45am

Room 25 10:00 - 11:15am

Room 24 10:30 - 11:45am

Room 5 11:00 - 12:15pm

Room 6 12.00 - 1:15pm

Room 7 12:30 - 1:45pm

Room 8 1:00 - 2:15pm

Room 9 1:30 - 2:45pm



SECOND-HAND UNIFORMS

If you are after any second-hand uniform items, such as tee-shirts, polo shirts, skorts, shorts, or sweatshirts, please get in touch with the Waterlea PTA and we will do our best to help you find what you need.

All items are \$2, except the fleece sweatshirts which are \$10

We also, accept donations of uniform, so please get in touch if you would like to donate.



Gmail: waterleapta@gmail.com | Facebook: @Waterlea PTA | Instagram: @waterleapta