



WATERLEA SCHOOL

He nui te akoranga ki Waterlea Great learning happens at Waterlea

Hello, Kia Ora, Kia Orana, Bonjour, Talofa Lava, Taloha Ni, Bula Vinaka, Ni Hau, Namaste,
Malo e Lelei, Deea awit, Sagutom, Fakalofa Lahi Atu, Dia daoibh, Sillaw, Huan Ying, Hola,
Konichiwa, Guten Tag, Здравствуйте

Newsletter 28 August 2024

Important Dates

| | |
|-----------|---|
| 30 August | Whole School Mana Assembly 9:30 |
| 30 August | PTA Casual Clothes Day |
| 4 Sept | Swimming Day |
| 6 Sept | Kahui Ako event 'All Out Showcase' Onehunga High School 5pm - 7:30pm |
| 10 Sept | Middle School Talent Show 9:15am |
| 11 Sept | MOSA Tackle Rugby Zone Day |
| 12 Sept | Junior Fun Run 9 - 9:30am |
| 19 Sept | Student Led Conferences Children go home at 1pm |
| 20 Sept | PTA Sausage Sizzle |
| 23 Sept | Board Of Trustees Hui 3:30pm |
| 23 Sept | Cross Country Yrs 3-6 |
| 24 Sept | Class & Individual Photos |
| 27 Sept | Whole School Mana Assembly 9:30 |
| 27 Sept | Term 3 Last Day |
| 25 Oct | Teacher Only Day (school closed) |

It was lovely to see our Year 1 tamariki leave this morning to walk down to Ambury Farm to participate in the Farm Experience - there were lots of excited little people buzzing around this morning that is for sure! Thank you to all the parents who made themselves available to support this trip today - we really appreciate it. The Year 1 tamariki aren't the only ones super excited at Waterlea at the moment. Many of our Yr 3-6 tamariki are busy preparing for our performance next Friday at the 'Showcase Event.' This event is organised by the whaanau group associated with our Kahui Ako. A Kahui Ako is a group of schools who collaborate with each other to bring about better educational outcomes for all students. Kahui Ako also have an opportunity to provide strong pathways for children transitioning from one context to another. Our Kahui Ako is made up of 7 primary and 1 Intermediate schools - Waterlea, Royal Oak, Onehunga, Te Papapa, Oranga, Maangere Bridge, St Josephs and Royal Oak Intermediate. We also have 2 high schools - Marcellin and Onehunga High. You are all welcome to come along to this event which is Friday 6 September at 5pm at Onehunga High School. Talking about performances, it was our pleasure to host the NZ Playhouse who performed the The Reluctant Dragon for our tamariki last week. Everyone thoroughly enjoyed the show and it certainly helped the senior school students who are focussing on play writing this term. A big thank you to Waterlea PTA for funding this performance for everyone to enjoy.



“The Reluctant Dragon”



Learning Support Team - Opportunity

An opportunity has come up in our Learning Support Team for a person who is interested in becoming a teacher aide at Waterlea School supporting our tamariki with diverse needs.

If you are interested in learning more please email reception@waterlea.school.nz



Attendance

One of the things we are continuing to focus on this term is student attendance. You will hear us talking about this with you and with our students. It also remains a strong subject of conversation in the staff room.

If a student misses one day of school every two weeks, they miss more than a whole year of school by 16 years of age. As a parent or caregiver, you, alongside our school, play a key role in building strong habits of regular school attendance.

All students are legally required to attend school every day and it is a shared responsibility to make sure students attend and engage in learning from when they first start school.

You must let the school know if your child is going to be absent or intends to be absent for a portion of the school term for whatever reason, like a tangi or medical procedure. Family holidays or taking time off for extracurricular activities (not organised by school) are not acceptable reasons for being absent.

We know that autumn has certainly brought its crisp mornings and winter is coming with all its chills, bugs and colds. Knowing if your child is well enough to go to school can be tricky at times. Health New Zealand/Te Whatu Ora have refreshed their guidance for schools and parents to use to help make that call. Check out the Ministry of Education [website](#) for more information. If you are still unsure, get in touch with us.

At our school we have strong processes and hygiene practices in place to make sure our school environment is as healthy as possible for our students and our staff.

If you're struggling at home with getting your child to school, talk to us! Our school is committed to supporting your child to attend school and building a culture that fosters excellent attendance by having:

- School staff who have strong relationships with students and whaanau.
- A school culture that recognises your child and your family for who they are, where they come from and who they want to be.
- A school community that does everything to make sure students are at school, they are participating, and progressing in their education.



Kia ora whanau,

We are currently missing quite a number of sports uniforms and we need them for our teams who go and play in the Zones sports competitions. Could everyone please have a look for t-shirts with collars, as pictured, that have Waterlea printed on the back.

These are our sports uniforms.

Please return them to the school office as soon as possible.

Thank you.

Judy Edwards and Steve Matthews
P.E. Lead Teachers



Football girls by Amber

The girls went to MOSA football yesterday. Me and Mia sat on the bus together. We finally arrived and started to unpack all the football stuff.

After that, we put our muddy boots on and headed for field 3. We sat down and ate some morning tea before the action started. I had an egg and ham croissant. Me and Emma did some passing and then some scoring with May in goal.

Finally it's Waterlea vs Southern Cross. My buddy from my soccer club Kelly was from Southern Cross. We smashed them! Sadly their goalie was really good, at least the score was one-nil. But the start of the game was great, May caught the ball in thin air.

The next game was rough but not too bad and no one got hurt. We lost one-nil but it was a good game. We had to wait for the semifinals. It felt like an hour but it was only thirty minutes.

Half of us needed to go to the bathroom. It was crusty there - it smelled like the boys bathroom at school. We saw my other buddy that I play with at football. We had a quick talk and headed back to field 3. We ran all the way back non-stop. We got ready to go on the field "but they are very tall. Sizes doesn't matter, we can do this" is what Emma keeps saying. The whistle blew and I did a slide tackle and nearly scored and did some great running but they were tough and didn't know how to play. We had a hard time and all of a sudden the whistle blew and the game was over. It was a draw and we had to do a penalty shoot-out. Everyone was very nervous and May saved a few goals, but it wasn't enough to save the day unfortunately. A few of us had some tears, as we really wanted to win - it was our dream! But we were happy that we gave our best effort on the day.

We finished 4th overall and we had a fantastic day. Thanks to Whaea Jenny for managing us on the day and to Mia's mum for helping us too.

And thanks to Mr Matthews and Ms Edwards for training us.



Remember Worm Wee is available from the office!

\$5 for 1 Litre

\$10 for 2 Litres



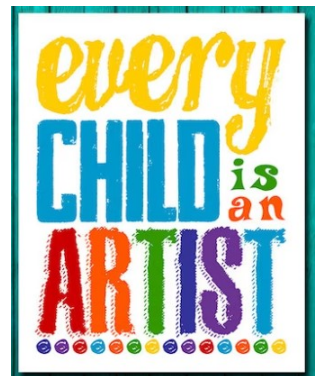
By Juliette



By Callum



By Ruby



love 
tennis

www.lovetennis.kiwi



FIND A CLUB NEAR YOU

FREE
EVENT

**EVERYONE
IS WELCOME!**

8 SEPTEMBER 2024

10-2PM

AT BRIDGE PARK TENNIS CLUB

All equipment provided. Prizes, giveaways, BBQ & more.

PROUDLY SUPPORTED BY



AO TRAVEL
& EXPERIENCES

ASB  CLASSIC

We're proudly supporting
Mental Health Foundation
MOUNT ID, MOUNT ERN
www.mentalhealth.org.nz

News from the Board of Trustees

Waterlea School Board Casual vacancy for a parent representative

A casual vacancy has occurred on the school board for an elected parent representative.

The board has decided to fill the vacancy by selection.

If 10% or more of eligible voters on the school roll ask the board, within 28 days of this notice being published, to hold a by-election to fill the vacancy, then a by-election will be held.

Request for a by-election should be sent to:

Presiding member

Waterlea School Board

17 House Ave

Māngere Bridge

Auckland



COLLECT YUMMY STICKERS AND GET SPORTS GEAR FOR OUR SCHOOL!

Collect the Yummy cut-out labels from bags (each cut-out label is worth 10 stickers) and individual Yummy apple stickers for Waterlea School's share of the \$200,000 free Sport sports gear prize pool.

Yummy apples are available from New World, PAK'nSAVE and participating Four Square stores. The more you collect, the more sports gear we can get so get going and start collecting your Yummy cut-out labels and stickers now!

All stickers/cut-outs along with your school's Total Tally Sheet must received by us by Tuesday 24 September.

[Download your sticker collection sheet here or pick one up at the office.](#)

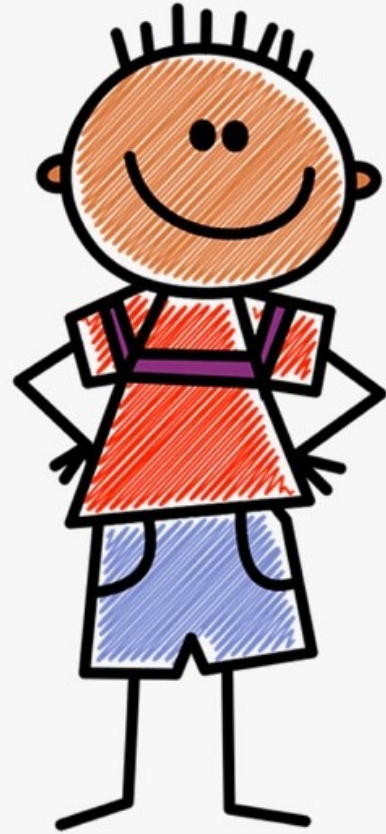


WATERLEA SCHOOL

**CASUAL
CLOTHES
DAY**

Friday, 30 August

On the day, please send in a gold coin donation with your child to give to their kaiako in support of the PTA fundraising efforts.

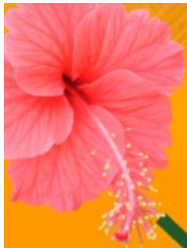


HELLO COOKIE MONSTERS!

Thanks to you cookie loving monsters, we have managed to sell over \$4,600 worth of cookies! We are so grateful for all of your efforts in making this happen.

On Thursday morning, we will have four \$25 The Warehouse vouchers waiting in the office as spot prizes. We will be in touch with the email addresses loaded in the system for these children to let you know they have won. Tell your kids to listen out on Thursday morning for their name over the loud speaker to come and collect their prize.





TIK Lalaga Presents

Friday 6th
September 2024

Starts at 5pm

Venue:
Onehunga High School

All Out SHOWCASE



Register your group now to secure your spot to perform at ALL OUT SHOWCASE - ALL are welcome!

Gold coin donation entry * Food available for purchase * Prizes * Special guest judges and MC And much more!

This is an evening of celebration at the "ALL OUT SHOWCASE" where students from our 10 schools will showcase their talents in a relaxed and supportive environment. This event is about enjoying food, entertainment, and celebrating our community's creativity.

Some examples of performance: * Cultural dance * Singing * Spoken word * Hip hop dance * Solo artist * Playing instruments * and so much more

Special Notes: Family members are welcome to perform alongside students in a supporting role if needed e.g. playing a back up instrument. Performances do not need to be polished; the focus is on participation and enjoyment.

Prizes: We are excited to announce special guest judges and prizes to be won, as well as spot prizes throughout the night.

Registration Procedure: Using the QR CODE to register your performance. Or you can email to register (email below).



For any questions, please email: lalagatik@gmail.com





JOIN US FOR
A
KANIKANI

MANGERE MEMORIAL HALL
530-930PM
DOORS OPEN 5PM

Featuring performances by Mangere Bridge and
Waterlea Primary Schools

FRIDAY 25 OCT

\$15 Adult 16yrs+
\$5 per child 5-15

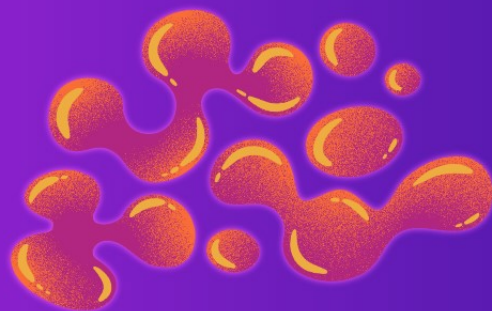
Free child ticket with every paying adult
02 0191 0378769 008

Surname as reference and child's name in
Particulars Field

Food and Drinks available to purchase
STRICTLY NO ALCOHOL, SMOKING OR
VAPING

For all enquiries
Contact Norma on
02108853324 or
norms75@hotmail.com

LIMITED TICKETS



Swimming - This Term - Years 4, 5 & 6

Community Swim will happen this term for our year 4, 5 and 6 tamariki. This is a fully funded opportunity for the children to learn water confidence and safety, and have some fun at Moana nui a Kiwa pools in Mangere.

Times as follows:

Room 10 9:30 - 10:45am

Room 25 10:00 - 11:15am

Room 24 10:30 - 11:45am

Room 5 11:00 - 12:15pm

Room 6 12.00 - 1:15pm

Room 7 12:30 - 1:45pm

Room 8 1:00 - 2:15pm

Room 9 1:30 - 2:45pm



SECOND-HAND UNIFORMS

If you are after any second-hand uniform items, such as tee-shirts, polo shirts, skorts, shorts, or sweatshirts, please get in touch with the Waterlea PTA and we will do our best to help you find what you need.

All items are \$2, except the fleece sweatshirts which are \$10

We also, accept donations of uniform, so please get in touch if you would like to donate.



Gmail: waterleapta@gmail.com | Facebook: @Waterlea PTA | Instagram: @waterleapta