



WATERLEA SCHOOL

He nui te akoranga ki Waterlea Great learning happens at Waterlea

Hello, Kia Ora, Kia Orana, Bonjour, Talofa Lava, Taloha Ni, Bula Vinaka, Ni Hau, Namaste,
Malo e Lelei, Deea awit, Sagutom, Fakalofa Lahi Atu, Dia daoibh, Sillaw, Huan Ying, Hola,
Konichiwa, Guten Tag, Здравствуйте

Newsletter 21 August 2024

Important Dates

- 22 August Playhouse Show Whole School
- 22 August Inter-school Football Girls
- 26 August New Entrants Cohort start
- 26 August Board Of Trustees Hui 3:30pm
- 28 August Swimming Lesson Day
- 30 August Whole School Mana Assembly 9:30
- 3 Sept Zone Rugby
- 6 Sept Kahui Ako event 'All Out Showcase'
Onehunga High School 5pm - 7:30pm
- 19 Sept Student Led Conferences
Children go home at 1pm
- 23 Sept Board Of Trustees Hui 3:30pm
- 23 Sept Cross Country Yrs 3-6
- 24 Sept Class & Individual Photos
- 27 Sept Whole School Mana Assembly 9:30
- 27 Sept Term 3 Last Day
- 25 Oct Teacher Only Day (school closed)
- Term 4 TBA Maaori Whaanau Hui 6pm - 8pm

Welcome to Uike Kātoanga'i 'o e lea faka-Tonga – Tonga Language Week.

The 2024 theme for Tonga Language Week is 'E tu'uloa 'a e lea faka-Tongá 'o ka lea'aki 'i 'api, siasí (lotú), mo e nofo-'a-kāingá - The Tongan Language will be sustainable when used at home, church and in the wider community.

This theme derives from the overarching Language Week Series theme for 2024, 'Sustainability'.



The beginning of Tonga Language Week was noticeable on crossing duty where a number of our tamariki dressed in clothes reflecting their Tongan culture. Salesi and Tevita, pictured below, are wearing tupenu faka fisi and ta'ovala. Julia is wearing a long dress with Tongan designs and Lilyan is wearing a kiekie over her pink long dress. Ruma Wha and Ruma Tekau ma wha had an exciting start to their Uike Kātoanga'i 'o e lea faka-Tonga – Tonga Language Week. Ben Vete, who is on our Board of Trustees and his parents Mele and Ben Vete introduced some Tongan cultural experiences to those classes' learning programmes on Monday. Our tamariki had opportunities to try some Tongan recipes, have a go at Tongan weaving and create Tongan patterns using lego. The Tongan treats pictured below are Otai Mango, a Tongan drink, Faikakai Tōpai, Tongan dumplings and deep fried keke. The tamariki had a lovely time engaging with these experiences through all their senses. Thank you to the Vete Whaanau for planning these activities and bringing Uike Kātoanga'i 'o e lea faka-Tonga, Tonga Language Week alive. You can read some thank you letters from our tamariki below.

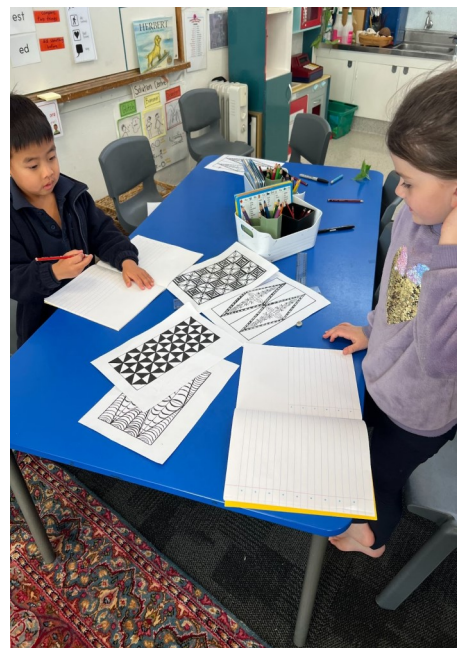
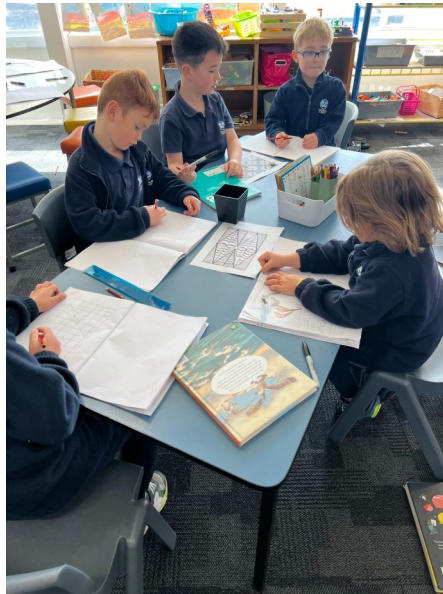


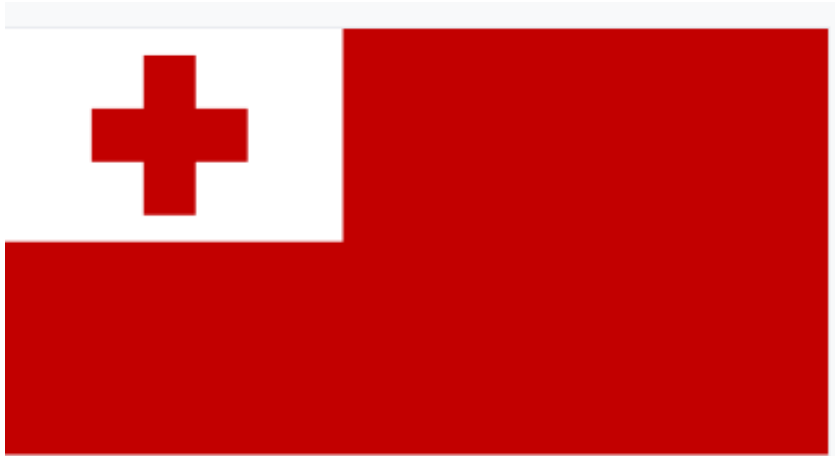
Lea Faka-Tonga 'e 'aonga kiata koe *Useful / Everyday words*

Common Phrases

Mālō e lelei	<i>Greetings / Hello</i>
Mālō e lelei	<i>Greetings everyone</i>
'Alu ā	<i>Goodbye – to those who are leaving (only if it applies)</i>
Nofo ā	<i>Goodbye – to those who are staying / Goodbye on the phone</i>
Fakamolemole / Kātaki	<i>Please</i>
Mālō 'aupito	<i>Thank you very much</i>
Fakamolemole	<i>Sorry</i>
Tulou / Kātaki fakamolemole	<i>Excuse me</i>









Dear Lilyan's
Whanau Thank
you for our
Tongan activities
we loved
everything from
Grace 2/10/24

Dear Ben
Shirley Ben
Jhr and Me
Mele, thank
you so much
for our special
Tongan activities
I liked every-
thing because it
was fun. Love J

Dear Ben
and Ben Jhr
and Mele
Thank you
for coming
to waterlea
I loved the
food and drinks
because I
I liked the
corobuit
LOVE from Tyliette

YIKES!!!

Cookie sales close on SUNDAY 25 AUGUST.

Make sure you don't miss out on getting your hands on these tasty, very easy lunch box, Sunday morning tea, or "oh my goodness someone is coming over" treats.

Either sign up to sell (before tomorrow at 5pm – we have some spot prize draws taking place – \$25 Warehouse vouchers), or find someone to purchase off – there will be someone to hunt down. But do it quickly. Once the sales close on Sunday – that is it.



Matilda The Musical
Thursday, 3 October
Show time: 7:30pm – 10:05pm
Bruce Mason Theatre Takapuna

TICKETS \$65 PER PERSON

DON'T MISS OUT – ONLY 40 TICKETS LEFT AT THIS PRICE.

Matilda the Musical is coming to town in a few weeks – and wonderfully falls in the school holidays. So ditch the kids for the night and plan a great one out for you and your friends.

Share this link with anyone you know that is interested – work colleagues included.

<https://forms.gle/uyasJ4YicxMXDRiw9>

Worm Wee Sale



Thanks to those that supported our sale on Friday afternoon. If you are still interested in purchasing some of this wonderful liquid fertiliser, we will have some available in the school office. Remember, the money raised will be going towards the purchase of seedlings and supplies for our Spring garden. Ngaa mihi



Waterlea School Board Casual vacancy for a parent representative

A casual vacancy has occurred on the school board for an elected parent representative.

The board has decided to fill the vacancy by selection.

If 10% or more of eligible voters on the school roll ask the board, within 28 days of this notice being published, to hold a by-election to fill the vacancy, then a by-election will be held.

Request for a by-election should be sent to:

Presiding member

Waterlea School Board

17 House Ave

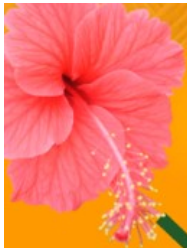
Māngere Bridge

Auckland



Just a reminder, please do not park and leave your car unattended outside the school office in the morning.

This is a quick drop off area.



TIK Lalaga Presents

Friday 6th
September 2024

Starts at 5pm

Venue:
Onehunga High School

All Out SHOWCASE



Register your group now to secure your spot to perform at ALL OUT SHOWCASE - ALL are welcome!

Gold coin donation entry * Food available for purchase * Prizes * Special guest judges and MC And much more!

This is an evening of celebration at the "ALL OUT SHOWCASE" where students from our 10 schools will showcase their talents in a relaxed and supportive environment. This event is about enjoying food, entertainment, and celebrating our community's creativity.

Some examples of performance: * Cultural dance * Singing * Spoken word * Hip hop dance * Solo artist * Playing instruments * and so much more

Special Notes: Family members are welcome to perform alongside students in a supporting role if needed e.g. playing a back up instrument. Performances do not need to be polished; the focus is on participation and enjoyment.

Prizes: We are excited to announce special guest judges and prizes to be won, as well as spot prizes throughout the night.

Registration Procedure: Using the QR CODE to register your performance. Or you can email to register (email below).



For any questions, please email: lalagatik@gmail.com





JOIN US FOR
A
KANIKANI

MANGERE MEMORIAL HALL
530-930PM
DOORS OPEN 5PM

Featuring performances by Mangere Bridge and
Waterlea Primary Schools

FRIDAY 25 OCT

\$15 Adult 16yrs+
\$5 per child 5-15

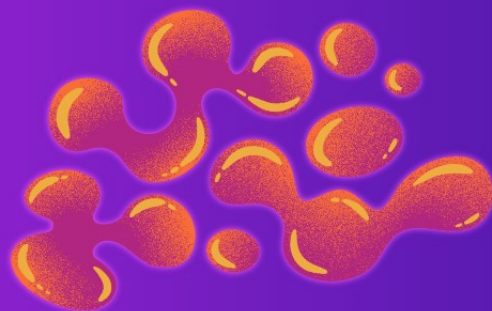
Free child ticket with every paying adult
02 0191 0378769 008

Surname as reference and child's name in
Particulars Field

Food and Drinks available to purchase
STRICTLY NO ALCOHOL, SMOKING OR
VAPING

For all enquiries
Contact Norma on
02108853324 or
norms75@hotmail.com

LIMITED TICKETS



WATERLEA PTA COOKIE DOUGH FUNDRAISER

To sign up to sell cookie dough on behalf of the PTA, here is your step-by-step guide on how to get involved. If last year's cookie dough feedback is anything to go by, make sure you add on some dough packets for yourself! They're delicious. And remember there are spot prizes for those who sign up to sell too!

This fundraiser is similar to the fundraising we used to do as children – knocking on neighbours' doors and asking them to buy various items. However, this one is done online and relies on you as parents to get sharing your child's page link to family and friends to purchase from you.

1. Jump onto this website: <https://waterleaschoolcookies.raiseit.co.nz/>
2. Click "Set up a Fundraising page"
3. Enter your child and your details – this creates their page
4. Grab the newly created page for your child, and share their URL with family, friends and work mates.
5. Pick up day is scheduled for Thursday 12th September from the school hall after school.

Note: What happens at pick up day is – YOU come and collect the cookies YOUR CHILD SOLD. Then you distribute to those who purchased from your child. Or they pick up from you. Whatever works best for you.

For product information, cooking times, and costs, check out this link:

<https://waterleaschoolcookies.raiseit.co.nz/productinfo>

You can't directly purchase from the PTA, but you can buy from anyone who has a page set up to sell cookies.

If you have any other questions, get in touch with the PTA on waterleapta@gmail.com

Ka rawe!





Matilda The Musical is the multi-award winning musical inspired by the beloved book by the incomparable Roald Dahl.

Inspired by the twisted genius of Roald Dahl, the Tony Award winning Roald Dahl's Matilda The Musical is the captivating masterpiece that revels in the anarchy of childhood, the power of imagination and the inspiring story of a girl who dreams of a better life. With book by Dennis Kelly and original songs by Tim Minchin this musical is a winner of over 100 international awards and continues to thrill sold-out audiences of all ages around the world.

GET TICKETS FOR:

Matilda The Musical

Thursday, 3 October

Show time: 7:30pm – 10:05pm

Bruce Mason Theatre, Takapuna

Thanks to our friends at The Amicii Trust, the PTA have managed to get our hands on 100 tickets to sell at a super discounted price.

Each ticket (both adults and children) is \$65, with \$20 going back to the PTA to contribute to our fundraising efforts. *Tickets are to be paid for in full within 3 business days to secure.*

Ticket sales will close on Friday 23 August. Tickets will be issued to you at the door with careful consideration taken to party sizes.

To register for tickets, please visit the link here:

<https://forms.gle/uyasJ4YicxMXDRiw9>

This offer is not restricted to only families of Waterlea, so bring your friends, colleagues or extended family members along to help us raise funds for our school.

Swimming - This Term - Years 4, 5 & 6

Community Swim will happen this term for our year 4, 5 and 6 tamariki. This is a fully funded opportunity for the children to learn water confidence and safety, and have some fun at Moana nui a Kiwa pools in Mangere.

Times as follows:

Room 10 9:30 - 10:45am

Room 25 10:00 - 11:15am

Room 24 10:30 - 11:45am

Room 5 11:00 - 12:15pm

Room 6 12.00 - 1:15pm

Room 7 12:30 - 1:45pm

Room 8 1:00 - 2:15pm

Room 9 1:30 - 2:45pm



SECOND-HAND UNIFORMS

If you are after any second-hand uniform items, such as tee-shirts, polo shirts, skorts, shorts, or sweatshirts, please get in touch with the Waterlea PTA and we will do our best to help you find what you need.

All items are \$2, except the fleece sweatshirts which are \$10

We also, accept donations of uniform, so please get in touch if you would like to donate.



Gmail: waterleapta@gmail.com | Facebook: @Waterlea PTA | Instagram: @waterleapta