



WATERLEA SCHOOL

He nui te akoranga ki Waterlea Great learning happens at Waterlea

Hello, Kia Ora, Kia Orana, Bonjour, Talofa Lava, Taloha Ni, Bula Vinaka, Ni Hau, Namaste,
Malo e Lelei, Deea awit, Sagutom, Fakalofa Lahi Atu, Dia daoibh, Sillaw, Huan Ying, Hola,
Konichiwa, Guten Tag, Здравствуйте

Newsletter 19 June 2024

Important Dates

20 June	Maritime Museum Rooms 8 + 9
21 June	Maritime Museum Room 5
22 June	PTA Quiz Night
24 June	Mid Year School Reports go home
26 June	Teacher Led Conferences 1:30pm
27 June	Whole School Mana Assembly 9:30am
28 June	Matariki (school closed)
1 July	Board of Trustees Hui 3:30pm
5 July	Dawn hikoi up Te pane o Mataoho
5 July	Matariki Assembly 11am
5 July	Last day of Term 2
22 July	First day of Term 3
22 July	New Cohort starts school
25 July	Structured Literacy Workshop for whanau 3:00pm
31 July	Year 4 - 6 Swimming Starts

WATERLEA HAS A NEW STRATEGIC PLAN

One of the key roles of the Board of Trustees (BoT) is to ensure that there is a strategy in place for the school that guides the Principal and school leadership team. The Ministry of Education has recently changed the approach by which schools develop this critical document, with a greater emphasis on engagement with the local community and an importance in reflecting the local context of the kura. Unlike previous approaches this strategy will be in place for three years with a refreshed implementation plan each year.

As such, over the last 8 months the BOT has undertaken a range of engagement and consultation processes in order to develop a new strategy for the school. This has included sessions with staff, the BOT, student voice and importantly input from whaanau and the parent community. We took a strong focus on wanting to understand what is special about Maangere Bridge as a place to live and Waterlea as a school and community. We then used this information alongside guidance provided by the MOE to all schools about the legal requirements that schools have to deliver on to develop our strategy.

One thing the board identified early on is that strategy processes and documents, while critical, are not always the most exciting things to be part of. As such we have tried to be engaging through this process and develop a one page strategy that is easy to read, provides a clear direction for the school and gives a real sense of who we are as a kura and community. We hope what has been produced resonates with you and we would be very happy to hear any feedback about the strategy.

Thanks,

Ken Maplesden

(Board of Trustees Strategy Lead)



**WATERLEA
SCHOOL**

With Learning We Grow

17 House Ave, Maangere Bridge, 09 636 4233, www.waterlea.school.nz



WATERLEA SCHOOL

Kura Waterlea - Mā te ako tātou tipu ai

**Nāku te rourou nāu te
rourou kā ora ai te iwi**

With your basket and
my basket the people
will thrive

OUR VISION

Waterlea creates **learners** that are **connected** to their unique local community and environment with a **strong sense of wellbeing**.

MANAAKITANGA

We are kind, caring
and supportive

AUMANGEA

We are persistent,
resilient and brave

NGAAKAU PONO

We are respectful,
honest and have
integrity

AKO

We learn, teach and
seek new knowledge



Teacher Led Conferences

Just a reminder regarding Teacher Led Conferences (TLC). Get in quickly and book your spot for **Wednesday 26th June from 1.30pm - 7.30pm**. We use an online booking system:

1. Go to www.schoolinterviews.co.nz
2. Use the code **hrnvk**
3. The event is called **Waterlea School Teacher Led Conferences 2024**
4. **Children stay home for this conference** and then come along for the Student Led Conference later this year
5. Any problems booking online, **phone the school office 096364233** and we'd be happy to help



Join the fun

sKids Early Closure
Teacher Led Conferences – 1:30
pm onwards

Write to us at hello@skids.co.nz or call us on 0800 274 172 for bookings or any questions.

Book Now

RISE THEN SHINE STAY AND PLAY

sKids



Our award-winning Waterlea Walking School Bus

Auckland Transport recently hosted their Megastars awards evening to recognise the time and effort put into Walking School Buses and the Travelwise programme by teachers and volunteers throughout Auckland.

A group of parent volunteers from our Waterlea Walking School Bus attended the event at Ellerslie Racecourse, where our Walking School Bus was a finalist for two awards on the night – and we were lucky enough to win them both! The awards were:

Auahatanga Award – The Auahatanga Award recognises the most creative Walking School Bus (route) that emphasises ingenuity, imagination, and a dedication to making the journey to school safe and stimulating for students. This was won by our Wallace Rd / Muir Ave route.

Whanaungatanga Award – The Whanaungatanga Award is awarded to a Walking School Bus Coordinator who embodies the principles of connection, relationships and building mutual support within their Walking School Bus volunteer community. This was won by Kirsten Robinson, who currently runs our Wallace Rd / Muir Ave route.

A big thank you to all the current and past volunteers who help make our Walking School Bus possible – we are very fortunate to have a wonderful community of parents who give up their time to help get our Tamariki to school each day in a fun and sustainable way.

If you're interested in joining the Walking School Bus – or are keen to start another route – check out our website for more information:

<https://www.waterlea.school.nz/information/walking-school-bus/>





Lucky Book Club

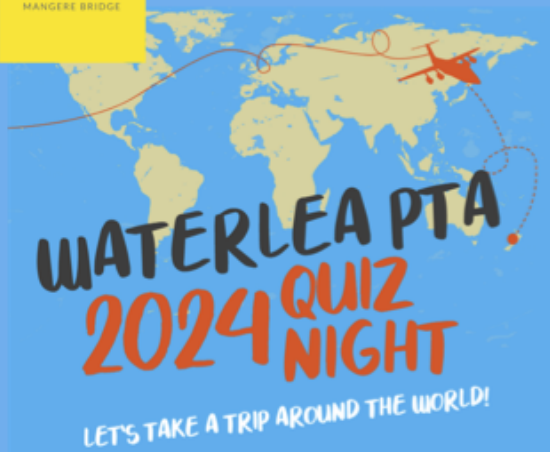
Lucky Book Club

Lucky Book Club

Thanks everyone for your support of our Library!

Tomorrow is the last day to order!

RayWhite
MANGERE BRIDGE



The Waterlea PTA would like to thank our sponsors for the 2024 Annual Quiz Night. We are so grateful for the generosity of these businesses and the resounding and continued support they provide for our school and tamariki. Please take the time to go and support them also.

Ray White Māngere Bridge
Auckland Rugby
My Food Bag
Pepper & Me
Rata Creek
CHI Haircare
Manukora Honey
Māngere Bridge Fresh Choice
Stuff.co.nz
Beautifully Frank
Jody Stewart
Percy Café
Gold Class Event Cinemas
Vector White Water Rafting
Treasure Island Mini Golf
Butterfly Creek
Auckland Zoo
Parakai Springs
Ferrero Rocher
Lisa Herrold
Farro Fresh
Tip Top
Panasonic NZ
Audi New Zealand

Hyper Drive
Neat Meat
Auckland Golf and Cameron whānau
Rocket Lab
Hubbards
Pulse Energy
Augustine
Glow Beauty
Māngere Bridge Pharmacy
Innerbloom Holistic Beauty
Southern Autos
Good Home Onehunga
EPIC Brewery
Primecare Dental
Ruby Red
Gravity Manukau
TimeZone Botany
Dressmart
New World Papatoetoe
The Gaff
Warriors NZ
ASB
Skycity
Fortuna

MĀNGERE BRIDGE NEURODIVERSE WHĀNAU SUPPORT GROUP



MISSION STATEMENT

To provide a safe space for whānau of neurodiverse mokopuna to find connection (whanaungatanga), compassion (manaakitanga) and support (āwhina) to help them grow and develop their whānau.

MEETING:

Tuesday Evenings 7.30pm - 9.30pm
during term time at
Māngere Bridge Baptist Church,
28 Woodward Avenue

Please contact Georgi – georgi.deS@gmail.com for further information or to register your interest to attend.

HOLIDAY HQ GAMES!

skids Waterlea
17 House Avenue, Mangere
Mon 8 Jul to Fri 19 Jul 2024

☎ 0800 274 172
Site Ph: 027 240 0024

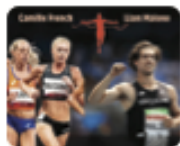
HOURS: 7AM TO 5.30PM
SHORT DAYS: 8AM TO 3PM

Please ensure all food complies with allergy guidelines.
Contact your programme for detailed information.

**MON
8
JUL**

OPENING CEREMONY

Join us for an exciting virtual hangout with 2 x Paralympic gold medalist Liam Malone and Paris 2024 Olympian Camille French. Hear all about their incredible journeys, from childhood adventures to competing for gold medals! Plus, unleash your creativity as we craft our own team banners.



SHORT DAY \$56.75
LONG DAY \$63.75
AS LOW AS* \$0-\$43.85



**MON
15
JUL**

READY SET FUN MAKE & TAKE: TABLETOP FINGER HOCKEY

Gear up for an adrenaline-fuelled day of hands - on fun! Construct and personalise your very own Tabletop Finger Hockey game with custom features and take it home to play with friends and family.



SHORT DAY \$56.75
LONG DAY \$63.75
EXPERIENCE FEE \$10.00
AS LOW AS* \$0-\$63.85



**TUE
9
JUL**

PASSPORT TO PARIS

Get ready to unleash your competitive spirit in an exhilarating capture the flag challenge! You'll also receive your very own global passport and keepsake lanyard, collecting stamps each day as you explore different countries as well as craft Stained Glass Windows like the ones from Notre Dame.



SHORT DAY \$56.75
LONG DAY \$63.75
AS LOW AS* \$0-\$43.85



**TUE
16
JUL**

YUM-GAMES

Ready, set, cook! Don your chef's hat for a tasty adventure as we whip up yummy French crepes. Then, get ready to indulge in some delicious fun with our cookie face race challenge. It's a culinary delight guaranteed to create sweet memories!



SHORT DAY \$56.75
LONG DAY \$63.75
AS LOW AS* \$0-\$43.85



**WED
10
JUL**

ART-LETIC GAMES MAKE & TAKE: DESIGN YOUR OWN T-SHIRT

Showcase your team spirit by designing your own team T-shirt. You'll also get to shape and create your own masterpiece in our clay medal making activity. It's a day filled to the brim with crafty celebrations!



SHORT DAY \$56.75
LONG DAY \$63.75
EXPERIENCE FEE \$10.00
AS LOW AS* \$0-\$53.85



**WED
17
JUL**

SKIDS SPORTS CARNIVAL PREMIUM INCURSION: SKIDS SPORTS CARNIVAL

Join us for a day of teamwork and fun challenges with an athletic twist! Compete in relay races and see if your team can come out on top. It will be a fun day for all!



LONG DAY \$63.75
EXPERIENCE FEE \$10.00
DAILY TOTAL \$73.75
AS LOW AS* \$0-\$53.85



**THU
11
JUL**

STEM RELAY GAMES EXCURSION: MOVIES - DESPICABLE ME 4

Today we are off to the cinemas to watch Gru and his inventive Minions in a whirlwind of STEM adventures! From building moon rockets to crafting shrink rays, Gru tackles daring heists and outsmarts rivals using science and technology.



LONG DAY \$63.75
EXPERIENCE FEE \$15.00
DAILY TOTAL \$78.75
AS LOW AS* \$0-\$66.86



**THU
18
JUL**

KEEP THE FLAME BURNING

Keep the flame burning for the final days of Holiday Games. Today we will be exploring indigenous games from around the world and making New Zealand native animals to take home.



SHORT DAY \$56.75
LONG DAY \$63.75
AS LOW AS* \$0-\$43.85



**FRI
12
JUL**

BUILDING BRICKS GAMES MAKE & TAKE: LEGO TEAM MASCOTS

Build your way to victory in the thrilling Building Brick Games! Create your own LEGO team mascot to take home, and reach new heights with our Eiffel Tower construction activity. It's a day filled with creativity and fun, as you unleash your inner engineer!



SHORT DAY \$56.75
LONG DAY \$63.75
EXPERIENCE FEE \$10.00
AS LOW AS* \$0-\$63.85



**FRI
19
JUL**

CLOSING CEREMONY

Join us for the grand finale of the Holiday HQ Games with a virtual medal ceremony presented by 3 x Olympian Dean Kent! Experience the excitement as we celebrate online with other children from across New Zealand, celebrating our achievements and friendships made along the way.



SHORT DAY \$56.75
LONG DAY \$63.75
AS LOW AS* \$0-\$43.85



*Based on one child full day at rate 0-3, OSCAR subsidy eligibility criteria will apply. More families now qualify for OSCAR Subsidy, please visit www.skids.co.nz/oscar-subsidy for eligibility and entitlement.

Please note that programmes and surcharges may be subject to change. Visit our website for the most up-to-date information. Special Experiences such as Excursions, Incursions, Premium Incursions, and Make & Take activities are an additional cost to the daily fee and are charged for each child that attends whether they choose to participate or not.



Scan for further information and to secure a spot in one of our holiday programs today!

www.skids.co.nz/holiday-programmes

skids

GLOBAL PASSPORT
CREATION
OPENING CEREMONY

MUSIQHUB

PLAY SMART



**Do you want to give your child the opportunity to enjoy fun experiences and learn new skills at school?
Do you want to share the gift of music with your kids?**

*Music lessons held on site
at Waterlea Primary School!
Introducing Keyboard Lessons*

MusiqHub are excited to offer private guitar and drum and keyboard tuition to students at Waterlea Primary School with experienced tutors JP Carroll and Joshua Nelson.

Students have fun, while learning a range of traditional and contemporary styled songs and techniques where they play together as a group, and as individuals.

Three Easy Steps to Sign Up:

1. Email ✓

jp.carroll@musiqhub.co.nz

Expressing your interest, and any questions you might have

2. Find the right lesson time for your student ✓

JP will help you choose from the options that are available

3. Confirm enrollment ✓

Provide the details requested and get ready to rock and roll!

If you're ready to connect with your children over the excitement, fun and joy of music, get in touch now so we can help you begin this journey!

SECOND-HAND UNIFORMS

If you are after any second-hand uniform items, such as tee-shirts, polo shirts, skorts, shorts, or sweatshirts, please get in touch with the Waterlea PTA and we will do our best to help you find what you need.

All items are \$2, except the fleece sweatshirts which are \$10

We also, accept donations of uniform, so please get in touch if you would like to donate.



Gmail: waterleapta@gmail.com | Facebook: @Waterlea PTA | Instagram: @waterleapta

Did you know...

**New OSCAR
thresholds from
April 1st!**

**Get up to 50 Hours
of Free Holiday Care
at sKids***

Find out if you qualify

*Free 50 hours apply to eligible families receiving the highest OSCAR Subsidy threshold.

